

Clessidra Table

design Paolo Vernier, 2019

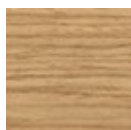
Fixed round table with solid or two-colored metal base.
Wooden version available. Crystalceramic, marble or wooden top.

The Clessidra table received a special mention in the 2021 edition of **German Design Award** and ranked 3° at **Edward Haimsohn Design Award 2019** <https://www.midj.com/world/classidra-table-finalist-of-edward-haimsohn-design-award>.



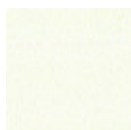
Colours and Materials

Structure

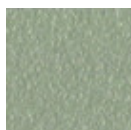


Stained ash veneered

10 Colours



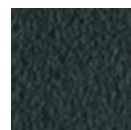
White steel



Sand steel



Pastel yellow steel



Grafite metal



Black steel



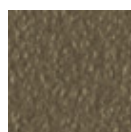
Light blue metal



Ocean blue steel



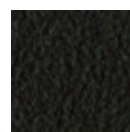
Bronze metal



Fango steel



Light grey steel



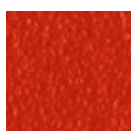
Brown steel



Ocher steel



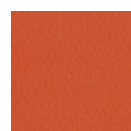
Facepowder pink metal



Red steel



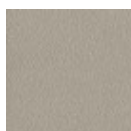
Sage green metal



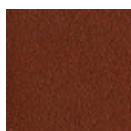
Papaya orange steel



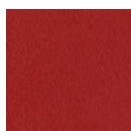
Golden yellow metal



Ash grey metal



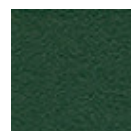
Bulgaro red metal



Cherry red metal



Pine green steel



Dark green metal

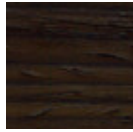
Top



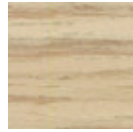
**Black lacquered
veneered ash**



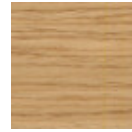
**White lacquered
veneered ash**



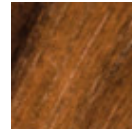
**Veneered ash
dark oak**



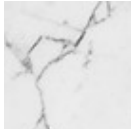
**Veneered ash
natural finish**



**Veneered ash
natural oak finish**



**Veneered
flamed walnut**



**Crystalceramic
marble**
4 Colours



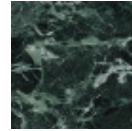
**Glossy white
calacatta marble
crystalceramic**



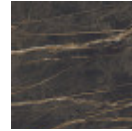
**Matt calacatta
marble
crystalceramic**



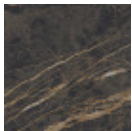
**Glossy greek
black marble
crystalceramic**



**Tinos green
matt marble
crystalceramic**



**Noir desir
glossy marble
crystalceramic**



**Noir desir
matt marble
crystalceramic**

Dimensions



	A (cm) (inch)	B (cm) (inch)	C (cm) (inch)
Ø 100 (cm) (inch)	75 29.5	100 39.4	100 39.4
Ø 120 (cm) (inch)	75 29.5	120 47.2	120 47.2
Ø 150 (cm) (inch)	76 29.9	150 59.1	150 59.1
Ø 180 (cm) (inch)	76 29.9	180 70.9	180 70.9
Barrel double base (cm) (inch)	76 29.9	300 118.1	150 59.1

Volumetric Details

Weight 150 - 210 Kg

Volume 0.7 mc

Package 1