



## Apelle desk Table

design Beatriz Sempere, 2013

Apelle desk with metal structure and wooden top. To complete it, hide drawer and LED lamp applied on the lampshade are available.

The desk is part of the [Apelle collection](#)

### Colours and Materials

#### Structure



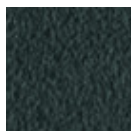
White steel



Sand steel



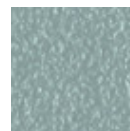
Pastel yellow steel



Grafite metal



Black steel



Light blue metal



Ocean blue steel



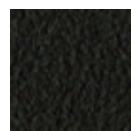
Bronze metal



Fango steel



Light grey steel



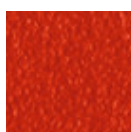
Brown steel



Ocher steel



Facepowder pink metal



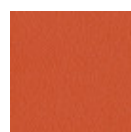
Red steel



Sage green metal



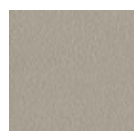
Black Nickel



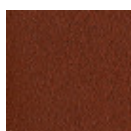
Papaya orange steel



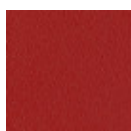
Golden yellow metal



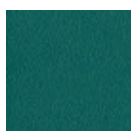
Ash grey metal



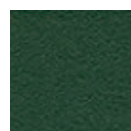
Bulgaro red metal



Cherry red metal



Pine green steel



Dark green metal

## Coating

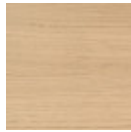


**Stained ash veneered**

10 Colours



**Veneered flamed walnut**



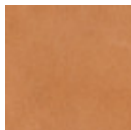
**Natural oak veneered**

## Extensions



**Hide**

18 Colours



**Tuscan hide**

6 Colours

## Dimensions



| A (cm) | B (cm) | C (cm) |
|--------|--------|--------|
| (inch) | (inch) | (inch) |
| 101    | 135    | 62     |
| 39.8   | 53.1   | 24.4   |

## Volumetric Details

**Weight** 17 Kg

**Volume** 0.95 mc

**Package** 2