

# PIANO

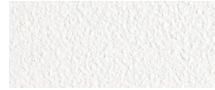
HARBOUR®  
OUTDOOR

## Piano\_07D 2 Seat 2 Arm sofa

### FRAME



Asteroid Powdercoat

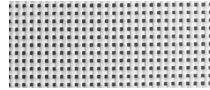


White Powdercoat

### SEAT



Silver Batyline



White Batyline

### BACK



Synteak



White HPCL

### CUSHION



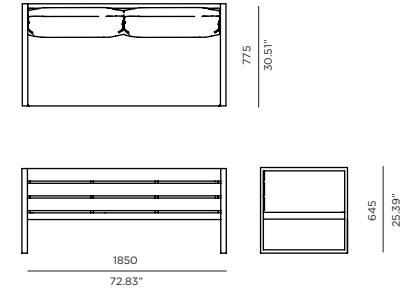
Sunbrella - Taupe



Sunbrella - Canvas



White Marine Vinyl



### SPECIAL FEATURES



#### PROTECTIVE COVER



### DESCRIPTION:

The Piano collection is a hallmark of the Harbour brand. Thick, durable, and modern, Piano provides the perfect mix of toughness and style. With the option of marine grade vinyl cushions, along with the Harbour's signature powder coated frames, and batyline mesh, Piano is the perfect compliment to poolside dining and entertainment in the sun.

### PROTECTIVE COVERS:

Protect your investment with water-repellent Sea-Sprae® fabric; protective backside coating, UV resistant.

### TECHNICAL INFORMATION

**POWDER COATED ALUMINIUM:**  
Asko Nobel® handcrafted, powder coated, rust-proof aluminium Frame, reinforced signature connection points.

**SYNTEAK:**  
Synthetic teak by infinitree, UV and water resistant top.

**HPCL:**  
Formica®, UV resistant, water resistant, commercial grade high pressure compact laminate.

**SUNBRELLA®:**  
Solution-dyed, acrylic fiber, UV, water, and mold resistant outdoor fabric.

**MARINE VINYL:**  
Nautolex® Marine-grade yacht and boat material, PVC coating, stain, UV and mildew resistant. Known for its extreme durability under the toughest conditions.

**SERGE FERRARI BATYLINE® MESH:**  
Light diffusing, UV and mold resistant, PVC coated.



# PIANO

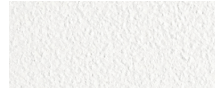
HARBOUR®  
OUTDOOR

## Piano\_07B 2 Seat Armless

### FRAME



Asteroid Powdercoat

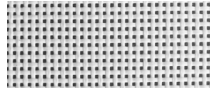


White Powdercoat

### SEAT



Silver Batyline



White Batyline

### BACK



Synteak



White HPCL

### CUSHION



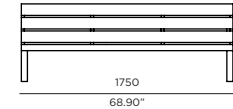
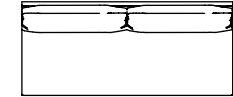
Sunbrella - Taupe



Sunbrella - Canvas



White Marine Vinyl



### SPECIAL FEATURES



#### PROTECTIVE COVER

### DESCRIPTION:

The Piano collection is a hallmark of the Harbour brand. Thick, durable, and modern, Piano provides the perfect mix of toughness and style. With the option of marine grade vinyl cushions, along with the Harbour's signature powder coated frames, and batyline mesh, Piano is the perfect compliment to poolside dining and entertainment in the sun.

### PROTECTIVE COVERS:

Protect your investment with water-repellent Sea-Sprae® fabric; protective backside coating, UV resistant.

### TECHNICAL INFORMATION

**POWDER COATED ALUMINIUM:**  
Askö Nobel \* handcrafted, powder coated, rust-proof aluminium Frame, reinforced signature connection points.

**SYNTEAK:**  
Synthetic teak by infinitree, UV and water resistant top.

**HPCL:**  
Formica \*, UV resistant, water resistant, commercial grade high pressure compact laminate.

**SUNBRELLA \*:**  
Solution-dyed, acrylic fiber, UV, water, and mold resistant outdoor fabric.

**MARINE VINYL:**  
Nautolex \* Marine-grade yacht and boat material, PVC coating, stain, UV and mildew resistant. Known for its extreme durability under the toughest conditions.

**SERGE FERRARI BATYLINE \* MESH:**  
Light diffusing, UV and mold resistant, PVC coated.



# PIANO

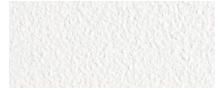
HARBOUR<sup>®</sup>  
OUTDOOR

## Piano\_07A 2 Seat Left/Right

### FRAME



Asteroid Powdercoat

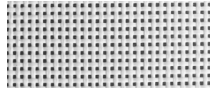


White Powdercoat

### SEAT

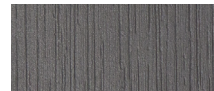


Silver Batyline



White Batyline

### BACK



Synteak

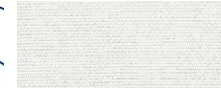


White HPCL

### CUSHION



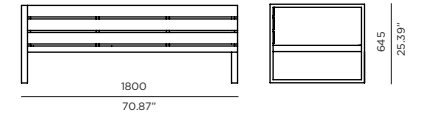
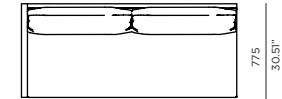
Sunbrella - Taupe



Sunbrella - Canvas

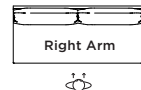
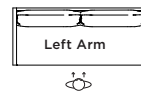


White Marine Vinyl



### ORIENTATION GUIDE

(Taken by facing Sofa)



### SPECIAL FEATURES



### PROTECTIVE COVER



### DESCRIPTION:

The Piano collection is a hallmark of the Harbour brand. Thick, durable, and modern, Piano provides the perfect mix of toughness and style. With the option of marine grade vinyl cushions, along with the Harbour's signature powder coated frames, and batyline mesh, Piano is the perfect compliment to poolside dining and entertainment in the sun.

### PROTECTIVE COVERS:

Protect your investment with water-repellent Sea-Sprae<sup>®</sup> fabric; protective backside coating, UV resistant.

### TECHNICAL INFORMATION

**POWDER COATED ALUMINIUM:**  
Asko Nobel<sup>®</sup> handcrafted, powder coated, rust-proof aluminium Frame, reinforced signature connection points.

**SYNTEAK:**  
Synthetic teak by infinitree, UV and water resistant top.

**HPCL:**  
Formica<sup>®</sup>, UV resistant, water resistant, commercial grade high pressure compact laminate.

**SUNBRELLA<sup>®</sup>:**  
Solution-dyed, acrylic fiber, UV, water, and mold resistant outdoor fabric.

**MARINE VINYL:**  
Nautolex<sup>®</sup> Marine-grade yaht and boat material, PVC coating, stain, UV and mildew resistant. Known for its extreme durability under the toughest conditions.

**SERGE FERRARI BATYLINE<sup>®</sup> MESH:**  
Light diffusing, UV and mold resistant, PVC coated.