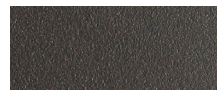


MACQ-10 Side table

FRAME

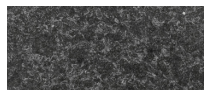


Asteroid Powdercoat

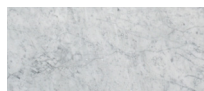


White Powdercoat

TABLE TOP



Granite - Black



Marble - White



450
17.72"



445
17.52"



SPECIAL FEATURES



PROTECTIVE COVER

DESCRIPTION:

Macquarie Coffee and Side Tables demonstrate a delicate balance between thick granite tops and bases with sheet thin aluminium sides, making these pieces the ultimate modern luxury statement.

Meticulously designed, these versatile accessories are distinct styling pieces ideal for storage and displaying your treasured items.

PROTECTIVE COVERS:

Protect your investment with water-repellent Sea-Sprae® fabric; protective backside coating, UV resistant.

TECHNICAL INFORMATION

POWDER COATED ALUMINIUM:
Asko Nobel® handcrafted, powder coated, rust-proof aluminium Frame, reinforced signature connection points.

CARRERA MARBLE:
Derived from Italy, this marble has a textured, antique, surface finish.

BLACK GRANITE:
Flamed and brushed, dense, stain resistant, and easy to maintain. Perfect for indoor or outdoor use.