

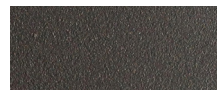


PIANO

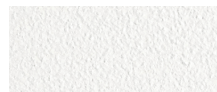
HARBOUR®
OUTDOOR

Piano-03A/03B/03C Rectangle Dining Tables

FRAME



Asteroid Powdercoat



White Powdercoat

TOP

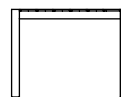
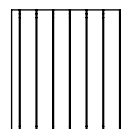


Synteak



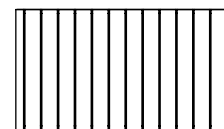
White HPCL

PIANO_03A



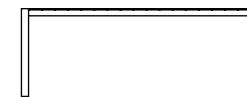
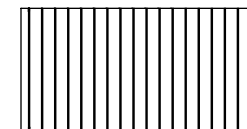
1025
40.35"

PIANO_03B



2025
79.72"

PIANO_03C



2625
103.35"
740
29.13"



SPECIAL FEATURES



PROTECTIVE COVER

DESCRIPTION:

The Piano collection is a hallmark of the Harbour brand. Thick, durable, and modern, Piano provides the perfect mix of toughness and style. With the option of marine grade vinyl cushions, along with the Harbour's signature powder coated frames, and batyline mesh, Piano is the perfect compliment to poolside dining and entertainment in the sun

PROTECTIVE COVERS:

Protect your investment with water-repellent Sea-Sprae® fabric; protective backside coating, UV resistant.

TECHNICAL INFORMATION

POWDER COATED ALUMINIUM: Asko Nobel® handcrafted, powder coated, rust-proof aluminum Frame, reinforced signature connection points.

SYNTEAK: Synthetic teak by infinitree, UV and water resistant top.

HPCL: Formica®, UV resistant, water resistant, commercial grade high pressure compact laminate.