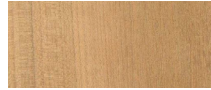


# PACIFIC

## Pacific-01 Folding chair

### FRAME

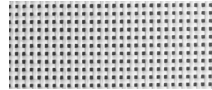


Teak natural



Teak burnt charcoal

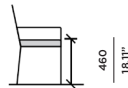
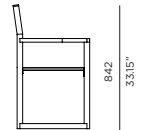
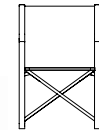
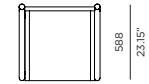
### SEAT



White Batyline



Sunbrella - Natural



### SPECIAL FEATURES



#### PROTECTIVE COVER

### DESCRIPTION:

Introducing, the Harbour Pacific Collection. A coastal, modern design, the Harbour Pacific Collection combines thick, removable arms, which creates custom sections of your choice. Robust, solid, and heavy duty, this brand new teak range can mold to any outdoor living space with ease. We take grade-A Indonesian, plantation teak to form a fresh collection with Harbour's classic quality and style. From teak folding chairs with Harbour's unique folding mechanism, extendable teak top tables, stacking sunbeds, and sofas with removable arms that create up to twelve layout combinations, the Pacific collection is designed to suit any need.

### PROTECTIVE COVERS:

Protect your investment with water-repellent Sea-Sprae® fabric; protective backside coating, UV resistant.

### TECHNICAL INFORMATION

**SUNBRELLA ®:**  
Solution-dyed, acrylic fiber, UV, water, and mold resistant outdoor fabric.

**TEAK:**  
100% plantation grown, premium A-Grade teak.

**SERGE FERRARI BATYLINE ® MESH:**  
Light diffusing, UV and mold resistant, PVC coated

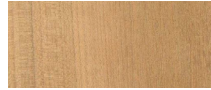
**Net Weight:** 8 kg / 17.6 lb



# PACIFIC

## Pacific-02 Extendable dining table

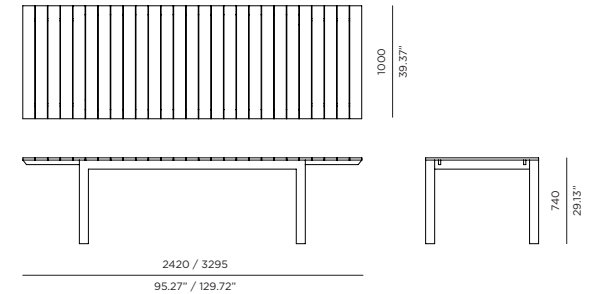
### FRAME



Teak natural



Teak burnt charcoal



### SPECIAL FEATURES



#### PROTECTIVE COVER

### DESCRIPTION:

Introducing, the Harbour Pacific Collection. A coastal, modern design, the Harbour Pacific Collection combines thick, removable arms, which creates custom sections of your choice. Robust, solid, and heavy duty, this brand new teak range can mold to any outdoor living space with ease. We take grade-A Indonesian, plantation teak to form a fresh collection with Harbour's classic quality and style. From teak folding chairs with Harbour's unique folding mechanism, extendable teak top tables, stacking sunbeds, and sofas with removable arms that create up to twelve layout combinations, the Pacific collection is designed to suit any need.

### PROTECTIVE COVERS:

Protect your investment with water-repellent Sea-Sprae® fabric; protective backside coating, UV resistant.

### TECHNICAL INFORMATION

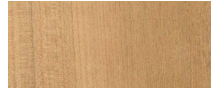
**TEAK:**  
100% plantation grown, premium A-Grade teak.  
**Net Weight:** 77 kg / 169.8 lb



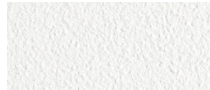
# PACIFIC

## Pacific-02B Extendable dining table

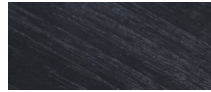
### FRAME



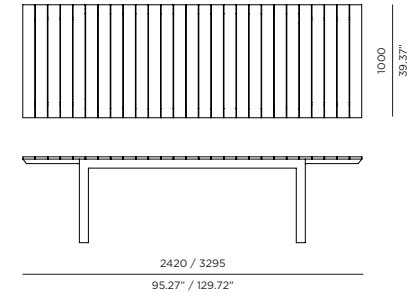
Teak natural



White Powdercoat



Teak burnt charcoal



### SPECIAL FEATURES



#### PROTECTIVE COVER

### DESCRIPTION:

Introducing, the Harbour Pacific Collection. A coastal, modern design, the Harbour Pacific Collection combines thick, removable arms, which creates custom sections of your choice. Robust, solid, and heavy duty, this brand new teak range can mold to any outdoor living space with ease. We take grade-A Indonesian, plantation teak to form a fresh collection with Harbour's classic quality and style. From teak folding chairs with Harbour's unique folding mechanism, extendable teak top tables, stacking sunbeds, and sofas with removable arms that create up to twelve layout combinations, the Pacific collection is designed to suit any need.

### PROTECTIVE COVERS:

Protect your investment with water-repellent Sea-Sprae® fabric; protective backside coating, UV resistant.

### TECHNICAL INFORMATION

**TEAK:**  
100% plantation grown, premium A-Grade teak.

**POWDER COATED ALUMINIUM:**  
Asko Nobel® handcrafted, powder coated, rust-proof aluminium Frame, reinforced signature connection points.

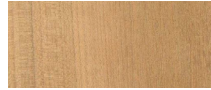
**Net Weight:** 68 kg / 149.9 lb



# PACIFIC

## Pacific-02C Round dining table

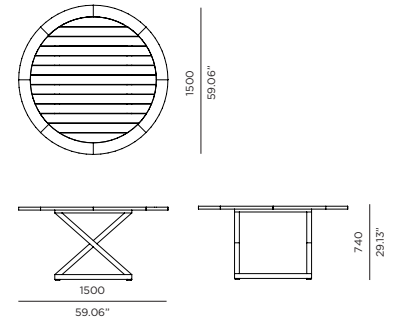
### FRAME



Teak natural



Teak burnt charcoal



### SPECIAL FEATURES



### PROTECTIVE COVER

### DESCRIPTION:

Introducing, the Harbour Pacific Collection. A coastal, modern design, the Harbour Pacific Collection combines thick, removable arms, which creates custom sections of your choice. Robust, solid, and heavy duty, this brand new teak range can mold to any outdoor living space with ease. We take grade-A Indonesian, plantation teak to form a fresh collection with Harbour's classic quality and style. From teak folding chairs with Harbour's unique folding mechanism, extendable teak top tables, stacking sunbeds, and sofas with removable arms that create up to twelve layout combinations, the Pacific collection is designed to suit any need.

### PROTECTIVE COVERS:

Protect your investment with water-repellent Sea-Sprae® fabric; protective backside coating, UV resistant.

### TECHNICAL INFORMATION

**TEAK:**  
100% plantation grown, premium A-Grade teak.

**Net Weight:** 73 kg / 160.9 lb



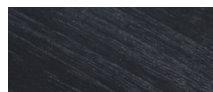
# PACIFIC

## Pacific-03A Sunlounger

### FRAME

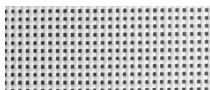


Teak natural

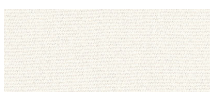


Teak burnt charcoal

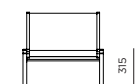
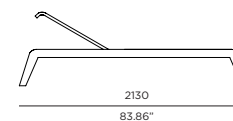
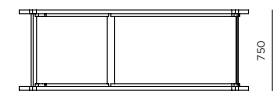
### SEAT



White Batyline



Sunbrella - Natural



### SPECIAL FEATURES



PROTECTIVE COVER



ADJUSTABLE



STACKABLE  
(up to 4)

### DESCRIPTION:

Introducing, the Harbour Pacific Collection. A coastal, modern design, the Harbour Pacific Collection combines thick, removable arms, which creates custom sections of your choice. Robust, solid, and heavy duty, this brand new teak range can mold to any outdoor living space with ease. We take grade-A Indonesian, plantation teak to form a fresh collection with Harbour's classic quality and style. From teak folding chairs with Harbour's unique folding mechanism, extendable teak top tables, stacking sunbeds, and sofas with removable arms that create up to twelve layout combinations, the Pacific collection is designed to suit any need.

### PROTECTIVE COVERS:

Protect your investment with water-repellent Sea-Sprae® fabric; protective backside coating, UV resistant.

### TECHNICAL INFORMATION

**SUNBRELLA®:**  
Solution-dyed, acrylic fiber, UV, water, and mold resistant outdoor fabric.

**TEAK:**  
100% plantation grown, premium A-Grade teak.

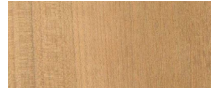
**SERGE FERRARI BATYLINE® MESH:**  
Light diffusing, UV and mold resistant, PVC coated

**Net Weight:** 29 kg / 63.9 lb

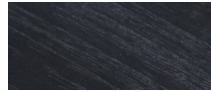
# PACIFIC

## Pacific-04 Double Sunlounge

### FRAME

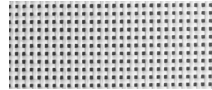


Teak natural



Teak burnt charcoal

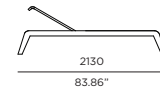
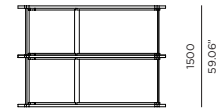
### SEAT



White Batyline



Sunbrella - Natural



### SPECIAL FEATURES



PROTECTIVE COVER



ADJUSTABLE



STACKABLE  
(up to 4)

### DESCRIPTION:

Introducing, the Harbour Pacific Collection. A coastal, modern design, the Harbour Pacific Collection combines thick, removable arms, which creates custom sections of your choice. Robust, solid, and heavy duty, this brand new teak range can mold to any outdoor living space with ease. We take grade-A Indonesian, plantation teak to form a fresh collection with Harbour's classic quality and style. From teak folding chairs with Harbour's unique folding mechanism, extendable teak top tables, stacking sunbeds, and sofas with removable arms that create up to twelve layout combinations, the Pacific collection is designed to suit any need.

### PROTECTIVE COVERS:

Protect your investment with water-repellent Sea-Sprae® fabric; protective backside coating, UV resistant.

### TECHNICAL INFORMATION

**SUNBRELLA®:**  
Solution-dyed, acrylic fiber, UV, water, and mold resistant outdoor fabric.

**TEAK:**  
100% plantation grown, premium A-Grade teak.

**SERGE FERRARI BATYLINE® MESH:**  
Light diffusing, UV and mold resistant, PVC coated

**Net Weight:** 57 kg / 125.7 lb

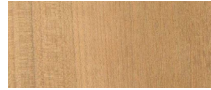




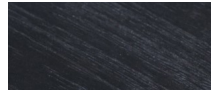
# PACIFIC

## Pacific-05 Side table

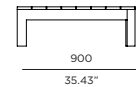
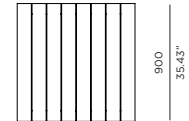
### FRAME



Teak natural



Teak burnt charcoal



### SPECIAL FEATURES



### PROTECTIVE COVER

### DESCRIPTION:

Introducing, the Harbour Pacific Collection. A coastal, modern design, the Harbour Pacific Collection combines thick, removable arms, which creates custom sections of your choice. Robust, solid, and heavy duty, this brand new teak range can mold to any outdoor living space with ease. We take grade-A Indonesian, plantation teak to form a fresh collection with Harbour's classic quality and style. From teak folding chairs with Harbour's unique folding mechanism, extendable teak top tables, stacking sunbeds, and sofas with removable arms that create up to twelve layout combinations, the Pacific collection is designed to suit any need.

### PROTECTIVE COVERS:

Protect your investment with water-repellent Sea-Sprae® fabric; protective backside coating, UV resistant.

### TECHNICAL INFORMATION

**TEAK:**  
100% plantation grown, premium A-Grade teak.

**Net Weight:** 20 kg / 44.1 lb



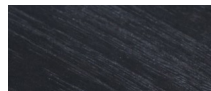
# PACIFIC

## Pacific-06 Coffee table

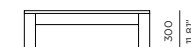
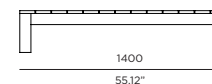
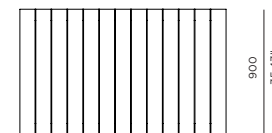
### FRAME



Teak natural



Teak burnt charcoal



### SPECIAL FEATURES



#### PROTECTIVE COVER

### DESCRIPTION:

Introducing, the Harbour Pacific Collection. A coastal, modern design, the Harbour Pacific Collection combines thick, removable arms, which creates custom sections of your choice. Robust, solid, and heavy duty, this brand new teak range can mold to any outdoor living space with ease. We take grade-A Indonesian, plantation teak to form a fresh collection with Harbour's classic quality and style. From teak folding chairs with Harbour's unique folding mechanism, extendable teak top tables, stacking sunbeds, and sofas with removable arms that create up to twelve layout combinations, the Pacific collection is designed to suit any need.

### PROTECTIVE COVERS:

Protect your investment with water-repellent Sea-Sprae® fabric; protective backside coating, UV resistant.

### TECHNICAL INFORMATION

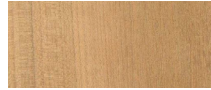
**TEAK:**  
100% plantation grown, premium A-Grade teak.  
**Net Weight:** 25 kg / 55.1 lb



# PACIFIC

## Pacific-07 Ottoman

### FRAME

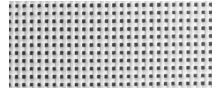


Teak natural



Teak burnt charcoal

### SEAT



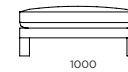
White Batyline



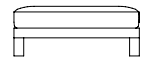
Sunbrella - Natural



900  
35.43"



1000  
39.37"



370  
14.57"

### SPECIAL FEATURES



#### PROTECTIVE COVER

### DESCRIPTION:

Introducing, the Harbour Pacific Collection. A coastal, modern design, the Harbour Pacific Collection combines thick, removable arms, which creates custom sections of your choice. Robust, solid, and heavy duty, this brand new teak range can mold to any outdoor living space with ease. We take grade-A Indonesian, plantation teak to form a fresh collection with Harbour's classic quality and style. From teak folding chairs with Harbour's unique folding mechanism, extendable teak top tables, stacking sunbeds, and sofas with removable arms that create up to twelve layout combinations, the Pacific collection is designed to suit any need.

### PROTECTIVE COVERS:

Protect your investment with water-repellent Sea-Sprae® fabric; protective backside coating, UV resistant.

### TECHNICAL INFORMATION

**SUNBRELLA ®:**  
Solution-dyed, acrylic fiber, UV, water, and mold resistant outdoor fabric.

**TEAK:**  
100% plantation grown, premium A-Grade teak.

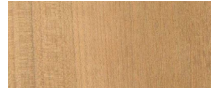
**SERGE FERRARI BATYLINE ® MESH:**  
Light diffusing, UV and mold resistant, PVC coated

**Net Weight:** 43 kg / 94.8 lb

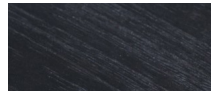
# PACIFIC

## Pacific-08A Single armless

### FRAME

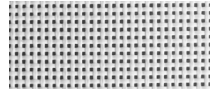


Teak natural

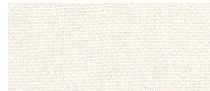


Teak burnt charcoal

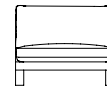
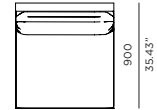
### SEAT



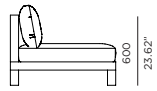
White Batyline



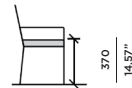
Sunbrella - Natural



900  
35.43"



600  
23.62"



### SPECIAL FEATURES



### PROTECTIVE COVER



### DESCRIPTION:

Introducing, the Harbour Pacific Collection. A coastal, modern design, the Harbour Pacific Collection combines thick, removable arms, which creates custom sections of your choice. Robust, solid, and heavy duty, this brand new teak range can mold to any outdoor living space with ease. We take grade-A Indonesian, plantation teak to form a fresh collection with Harbour's classic quality and style. From teak folding chairs with Harbour's unique folding mechanism, extendable teak top tables, stacking sunbeds, and sofas with removable arms that create up to twelve layout combinations, the Pacific collection is designed to suit any need.

### PROTECTIVE COVERS:

Protect your investment with water-repellent Sea-Sprae® fabric; protective backside coating, UV resistant.

### TECHNICAL INFORMATION

**SUNBRELLA®:**  
Solution-dyed, acrylic fiber, UV, water, and mold resistant outdoor fabric.

**TEAK:**  
100% plantation grown, premium A-Grade teak.

**SERGE FERRARI BATYLINE® MESH:**  
Light diffusing, UV and mold resistant, PVC coated

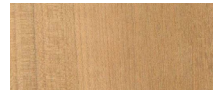
**Net Weight:** 27 kg / 59.5 lb



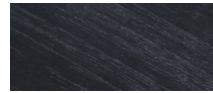
# PACIFIC

## Pacific-08B Corner arm L&R

### FRAME

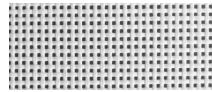


Teak natural

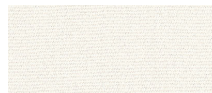


Teak burnt charcoal

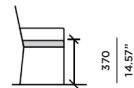
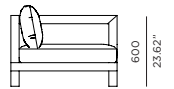
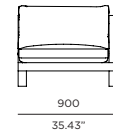
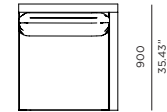
### SEAT



White Batyline



Sunbrella - Natural



### ORIENTATION GUIDE (Taken by facing Sofa)



Left Arm



Right Arm

### SPECIAL FEATURES



### PROTECTIVE COVER



### DESCRIPTION:

Introducing, the Harbour Pacific Collection. A coastal, modern design, the Harbour Pacific Collection combines thick, removable arms, which creates custom sections of your choice. Robust, solid, and heavy duty, this brand new teak range can mold to any outdoor living space with ease. We take grade-A Indonesian, plantation teak to form a fresh collection with Harbour's classic quality and style. From teak folding chairs with Harbour's unique folding mechanism, extendable teak top tables, stacking sunbeds, and sofas with removable arms that create up to twelve layout combinations, the Pacific collection is designed to suit any need.

### PROTECTIVE COVERS:

Protect your investment with water-repellent Sea-Sprae® fabric; protective backside coating, UV resistant.

### TECHNICAL INFORMATION

**SUNBRELLA®:**  
Solution-dyed, acrylic fiber, UV, water, and mold resistant outdoor fabric.

**TEAK:**  
100% plantation grown, premium A-Grade teak.

**SERGE FERRARI BATYLINE® MESH:**  
Light diffusing, UV and mold resistant, PVC coated

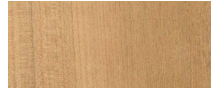
**Net Weight:** 31 kg / 68.3 lb



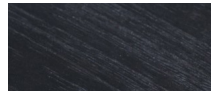
# PACIFIC

## Pacific-08C Armchair

### FRAME

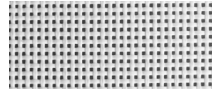


Teak natural



Teak burnt charcoal

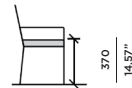
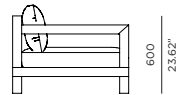
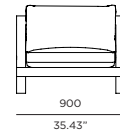
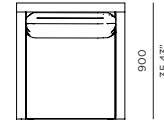
### SEAT



White Batyline



Sunbrella - Natural



### SPECIAL FEATURES



### PROTECTIVE COVER

### DESCRIPTION:

Introducing, the Harbour Pacific Collection. A coastal, modern design, the Harbour Pacific Collection combines thick, removable arms, which creates custom sections of your choice. Robust, solid, and heavy duty, this brand new teak range can mold to any outdoor living space with ease. We take grade-A Indonesian, plantation teak to form a fresh collection with Harbour's classic quality and style. From teak folding chairs with Harbour's unique folding mechanism, extendable teak top tables, stacking sunbeds, and sofas with removable arms that create up to twelve layout combinations, the Pacific collection is designed to suit any need.

### PROTECTIVE COVERS:

Protect your investment with water-repellent Sea-Sprae® fabric; protective backside coating, UV resistant.

### TECHNICAL INFORMATION

**SUNBRELLA®:**  
Solution-dyed, acrylic fiber, UV, water, and mold resistant outdoor fabric.

**TEAK:**  
100% plantation grown, premium A-Grade teak.

**SERGE FERRARI BATYLINE® MESH:**  
Light diffusing, UV and mold resistant, PVC coated

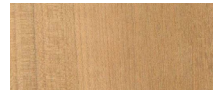
**Net Weight:** 35 kg / 77.2 lb



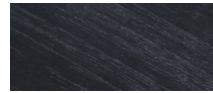
# PACIFIC

## Pacific-09A 2 seat armless

### FRAME

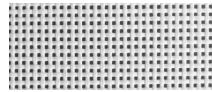


Teak natural

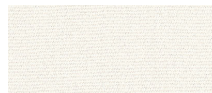


Teak burnt charcoal

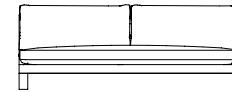
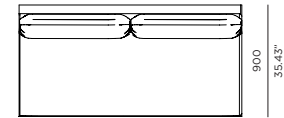
### SEAT



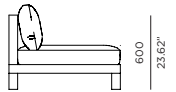
White Batyline



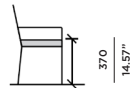
Sunbrella - Natural



1800  
70.87"



600  
23.62"



370  
14.57"

### SPECIAL FEATURES



#### PROTECTIVE COVER

### DESCRIPTION:

Introducing, the Harbour Pacific Collection. A coastal, modern design, the Harbour Pacific Collection combines thick, removable arms, which creates custom sections of your choice. Robust, solid, and heavy duty, this brand new teak range can mold to any outdoor living space with ease. We take grade-A Indonesian, plantation teak to form a fresh collection with Harbour's classic quality and style. From teak folding chairs with Harbour's unique folding mechanism, extendable teak top tables, stacking sunbeds, and sofas with removable arms that create up to twelve layout combinations, the Pacific collection is designed to suit any need.

### PROTECTIVE COVERS:

Protect your investment with water-repellent Sea-Sprae® fabric; protective backside coating, UV resistant.

### TECHNICAL INFORMATION

**SUNBRELLA®:**  
Solution-dyed, acrylic fiber, UV, water, and mold resistant outdoor fabric.

**TEAK:**  
100% plantation grown, premium A-Grade teak.

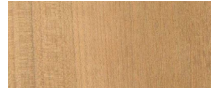
**SERGE FERRARI BATYLINE® MESH:**  
Light diffusing, UV and mold resistant, PVC coated

**Net Weight:** 47 kg / 103.6 lb

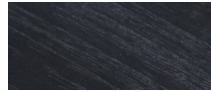
# PACIFIC

## Pacific-09B 2 seat 1 arm

### FRAME

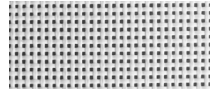


Teak natural



Teak burnt charcoal

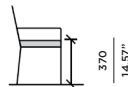
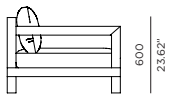
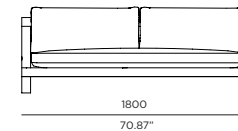
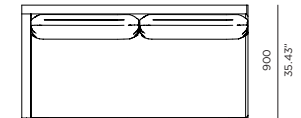
### SEAT



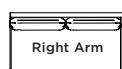
White Batyline



Sunbrella - Natural



### ORIENTATION GUIDE (Taken by facing Sofa)



### SPECIAL FEATURES



### PROTECTIVE COVER



### DESCRIPTION:

Introducing, the Harbour Pacific Collection. A coastal, modern design, the Harbour Pacific Collection combines thick, removable arms, which creates custom sections of your choice. Robust, solid, and heavy duty, this brand new teak range can mold to any outdoor living space with ease. We take grade-A Indonesian, plantation teak to form a fresh collection with Harbour's classic quality and style. From teak folding chairs with Harbour's unique folding mechanism, extendable teak top tables, stacking sunbeds, and sofas with removable arms that create up to twelve layout combinations, the Pacific collection is designed to suit any need.

### PROTECTIVE COVERS:

Protect your investment with water-repellent Sea-Sprae® fabric; protective backside coating, UV resistant.

### TECHNICAL INFORMATION

**SUNBRELLA®:**  
Solution-dyed, acrylic fiber, UV, water, and mold resistant outdoor fabric.

**TEAK:**  
100% plantation grown, premium A-Grade teak.

**SERGE FERRARI BATYLINE® MESH:**  
Light diffusing, UV and mold resistant, PVC coated

**Net Weight:** 50 kg / 110.2 lb





# PACIFIC

## Pacific-09C 2 seat 2 arm

### FRAME

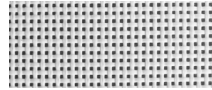


Teak natural

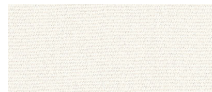


Teak burnt charcoal

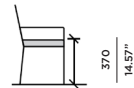
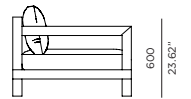
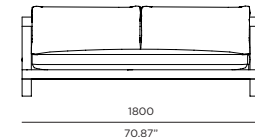
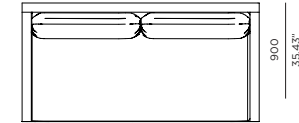
### SEAT



White Batyline



Sunbrella - Natural



### SPECIAL FEATURES



### PROTECTIVE COVER



### DESCRIPTION:

Introducing, the Harbour Pacific Collection. A coastal, modern design, the Harbour Pacific Collection combines thick, removable arms, which creates custom sections of your choice. Robust, solid, and heavy duty, this brand new teak range can mold to any outdoor living space with ease. We take grade-A Indonesian, plantation teak to form a fresh collection with Harbour's classic quality and style. From teak folding chairs with Harbour's unique folding mechanism, extendable teak top tables, stacking sunbeds, and sofas with removable arms that create up to twelve layout combinations, the Pacific collection is designed to suit any need.

### PROTECTIVE COVERS:

Protect your investment with water-repellent Sea-Sprae® fabric; protective backside coating, UV resistant.

### TECHNICAL INFORMATION

**SUNBRELLA ®:**  
Solution-dyed, acrylic fiber, UV, water, and mold resistant outdoor fabric.

**TEAK:**  
100% plantation grown, premium A-Grade teak.

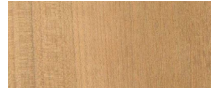
**SERGE FERRARI BATYLINE ® MESH:**  
Light diffusing, UV and mold resistant, PVC coated

**Net Weight:** 53 kg / 116.8 lb

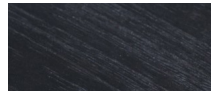
# PACIFIC

## Pacific-09D 3 seat 2 arm

### FRAME

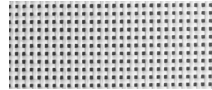


Teak natural

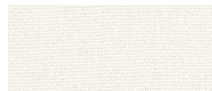


Teak burnt charcoal

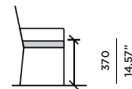
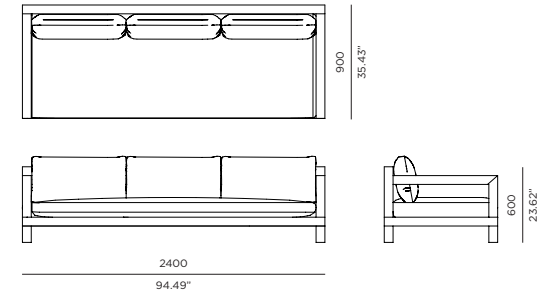
### SEAT



White Batyline



Sunbrella - Natural



### SPECIAL FEATURES



#### PROTECTIVE COVER

### DESCRIPTION:

Introducing, the Harbour Pacific Collection. A coastal, modern design, the Harbour Pacific Collection combines thick, removable arms, which creates custom sections of your choice. Robust, solid, and heavy duty, this brand new teak range can mold to any outdoor living space with ease. We take grade-A Indonesian, plantation teak to form a fresh collection with Harbour's classic quality and style. From teak folding chairs with Harbour's unique folding mechanism, extendable teak top tables, stacking sunbeds, and sofas with removable arms that create up to twelve layout combinations, the Pacific collection is designed to suit any need.

### PROTECTIVE COVERS:

Protect your investment with water-repellent Sea-Sprae® fabric; protective backside coating, UV resistant.

### TECHNICAL INFORMATION

**SUNBRELLA®:**  
Solution-dyed, acrylic fiber, UV, water, and mold resistant outdoor fabric.

**TEAK:**  
100% plantation grown, premium A-Grade teak.

**SERGE FERRARI BATYLINE® MESH:**  
Light diffusing, UV and mold resistant, PVC coated

**Net Weight:** 70 kg / 154.3 lb



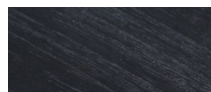
# PACIFIC

## Pacific-14 Sunlounger

### FRAME

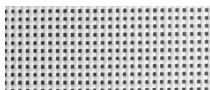


Teak natural

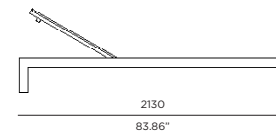
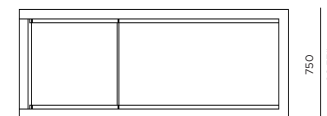


Teak burnt charcoal

### SEAT



White Batyline



### SPECIAL FEATURES



#### PROTECTIVE COVER

### DESCRIPTION:

Introducing, the Harbour Pacific Collection. A coastal, modern design, the Harbour Pacific Collection combines thick, removable arms, which creates custom sections of your choice. Robust, solid, and heavy duty, this brand new teak range can mold to any outdoor living space with ease. We take grade-A Indonesian, plantation teak to form a fresh collection with Harbour's classic quality and style. From teak folding chairs with Harbour's unique folding mechanism, extendable teak top tables, stacking sunbeds, and sofas with removable arms that create up to twelve layout combinations, the Pacific collection is designed to suit any need.

### PROTECTIVE COVERS:

Protect your investment with water-repellent Sea-Sprae® fabric; protective backside coating, UV resistant.

### TECHNICAL INFORMATION

**TEAK:**  
100% plantation grown, premium A-Grade teak.

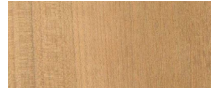
**SERGE FERRARI BATYLINE \* MESH:**  
Light diffusing, UV and mold resistant, PVC coated

**Net Weight:** 29 kg / 63.9 lb

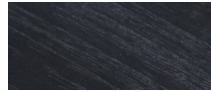
# PACIFIC

## Pacific-10A Stool

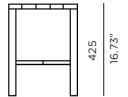
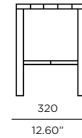
### FRAME



Teak natural



Teak burnt charcoal



### SPECIAL FEATURES



### PROTECTIVE COVER

### DESCRIPTION:

Introducing, the Harbour Pacific Collection. A coastal, modern design, the Harbour Pacific Collection combines thick, removable arms, which creates custom sections of your choice. Robust, solid, and heavy duty, this brand new teak range can mold to any outdoor living space with ease. We take grade-A Indonesian, plantation teak to form a fresh collection with Harbour's classic quality and style. From teak folding chairs with Harbour's unique folding mechanism, extendable teak top tables, stacking sunbeds, and sofas with removable arms that create up to twelve layout combinations, the Pacific collection is designed to suit any need.

### PROTECTIVE COVERS:

Protect your investment with water-repellent Sea-Sprae® fabric; protective backside coating, UV resistant.

### TECHNICAL INFORMATION

**TEAK:**  
100% plantation grown, premium A-Grade teak.

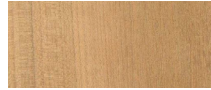
**Net Weight:** 5 kg / 11.0 lb



# PACIFIC

## Pacific-10B Stool

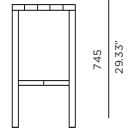
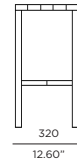
### FRAME



Teak natural



Teak burnt charcoal



### SPECIAL FEATURES



### PROTECTIVE COVER

### DESCRIPTION:

Introducing, the Harbour Pacific Collection. A coastal, modern design, the Harbour Pacific Collection combines thick, removable arms, which creates custom sections of your choice. Robust, solid, and heavy duty, this brand new teak range can mold to any outdoor living space with ease. We take grade-A Indonesian, plantation teak to form a fresh collection with Harbour's classic quality and style. From teak folding chairs with Harbour's unique folding mechanism, extendable teak top tables, stacking sunbeds, and sofas with removable arms that create up to twelve layout combinations, the Pacific collection is designed to suit any need.

### PROTECTIVE COVERS:

Protect your investment with water-repellent Sea-Sprae® fabric; protective backside coating, UV resistant.

### TECHNICAL INFORMATION

**TEAK:**  
100% plantation grown, premium A-Grade teak.

**Net Weight:** 12 kg / 26.5 lb