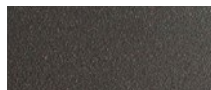


# HAMILTON

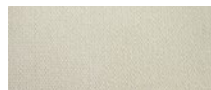
## HAMILTON\_01 Dining Chair

### FRAME



Powdercoat - Asteroid

### CUSHION



Sunbrella - Canvas canvas

### ACCENT



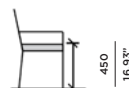
Olephin Rope



620  
22.83"



790  
31.49"



450  
16.93"

### SPECIAL FEATURES



### PROTECTIVE COVER



### DESCRIPTION:

Tree-top living meets luxury in this range inspired by the lush environment of Hamilton Island, Australia. The fresh-feel collection makes use of rope olephin on the arms, combined with Harbour's signature powder-coated frame. With a comely clean design in mind, it keeps the intention clear, to brighten and lighten any space this sculptural piece will inhabit. This airy, vertical silhouette series is ready to elevate any natural sanctuary.

### PROTECTIVE COVERS:

Protect your investment with water-repellent Sea-Sprae® fabric; protective backside coating, UV resistant.

### TECHNICAL INFORMATION

#### POWDER COATED ALUMINIUM:

Asko Nobel® handcrafted, powder coated, rust-proof aluminium frame, reinforced signature connection points.

#### SUNBRELLA®:

Solution-dyed, acrylic fiber, UV, water, and mold resistant outdoor fabric.

**Net Weight:** 8 kg / 17.6 lb

# HAMILTON

## HAMILTON\_02 Arm Chair

### FRAME



Powdercoat - Asteroid

### CUSHION

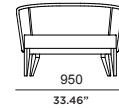
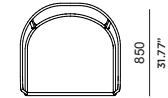


Sunbrella - Canvas canvas

### ACCENT



Olephin Rope



### SPECIAL FEATURES



### PROTECTIVE COVER

### DESCRIPTION:

Tree-top living meets luxury in this range inspired by the lush environment of Hamilton Island, Australia. The fresh-feel collection makes use of rope olephin on the arms, combined with Harbour's signature powder-coated frame. With a comely clean design in mind, it keeps the intention clear, to brighten and lighten any space this sculptural piece will inhabit. This airy, vertical silhouette series is ready to elevate any natural sanctuary.

### PROTECTIVE COVERS:

Protect your investment with water-repellent Sea-Sprae® fabric; protective backside coating, UV resistant.

### TECHNICAL INFORMATION

#### POWDER COATED ALUMINIUM:

Asko Nobel® handcrafted, powder coated, rust-proof aluminium Frame, reinforced signature connection points.

#### SUNBRELLA®:

Solution-dyed, acrylic fiber, UV, water, and mold resistant outdoor fabric.

**Net Weight:** 48 kg / 105.8 lb

# HAMILTON

## HAMILTON\_03 2 Seat Lounge

### FRAME



Powdercoat - Asteroid

### CUSHION

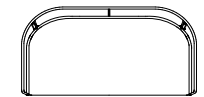


Sunbrella - Canvas canvas

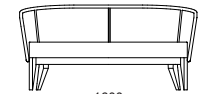
### ACCENT



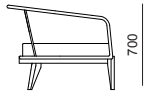
Olephin Rope



860  
31.77"



1600  
67.9"



700  
27.55"



350  
13.78"

### SPECIAL FEATURES



### PROTECTIVE COVER

### DESCRIPTION:

Tree-top living meets luxury in this range inspired by the lush environment of Hamilton Island, Australia. The fresh-feel collection makes use of rope olephin on the arms, combined with Harbour's signature powder-coated frame. With a comely clean design in mind, it keeps the intention clear, to brighten and lighten any space this sculptural piece will inhabit. This airy, vertical silhouette series is ready to elevate any natural sanctuary.

### PROTECTIVE COVERS:

Protect your investment with water-repellent Sea-Sprae® fabric; protective backside coating, UV resistant.

### TECHNICAL INFORMATION

#### POWDER COATED ALUMINIUM:

Asko Nobel® handcrafted, powder coated, rust-proof aluminium frame, reinforced signature connection points.

#### SUNBRELLA®:

Solution-dyed, acrylic fiber, UV, water, and mold resistant outdoor fabric.

**Net Weight:** 50 kg / 110.2 lb

# HAMILTON

## HAMILTON\_04 3 Seat Lounge

### FRAME



Powdercoat - Asteroid

### CUSHION

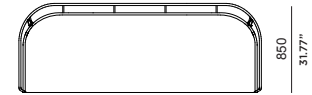


Sunbrella - Canvas canvas

### ACCENT



Olephin Rope



2350  
92.51"



### SPECIAL FEATURES



### PROTECTIVE COVER

### DESCRIPTION:

Tree-top living meets luxury in this range inspired by the lush environment of Hamilton Island, Australia. The fresh-feel collection makes use of rope olephin on the arms, combined with Harbour's signature powder-coated frame. With a comely clean design in mind, it keeps the intention clear, to brighten and lighten any space this sculptural piece will inhabit. This airy, vertical silhouette series is ready to elevate any natural sanctuary.

### PROTECTIVE COVERS:

Protect your investment with water-repellent Sea-Sprae® fabric; protective backside coating, UV resistant.

### TECHNICAL INFORMATION

#### POWDER COATED ALUMINIUM:

Asko Nobel® handcrafted, powder coated, rust-proof aluminium Frame, reinforced signature connection points.

#### SUNBRELLA®:

Solution-dyed, acrylic fiber, UV, water, and mold resistant outdoor fabric.

**Net Weight:** 53 kg / 116.8 lb

# HAMILTON

## HAMILTON\_05 Ottoman

### FRAME

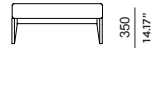
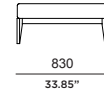


Powdercoat - Asteroid

### CUSHION



Sunbrella - Canvas canvas



### SPECIAL FEATURES



#### PROTECTIVE COVER

### DESCRIPTION:

Tree-top living meets luxury in this range inspired by the lush environment of Hamilton Island, Australia. The fresh-feel collection makes use of rope olephin on the arms, combined with Harbour's signature powder-coated frame. With a comely clean design in mind, it keeps the intention clear, to brighten and lighten any space this sculptural piece will inhabit. This airy, vertical silhouette series is ready to elevate any natural sanctuary.

### PROTECTIVE COVERS:

Protect your investment with water-repellent Sea-Sprae® fabric; protective backside coating, UV resistant.

### TECHNICAL INFORMATION

#### POWDER COATED ALUMINIUM:

Asko Nobel® handcrafted, powder coated, rust-proof aluminium Frame, reinforced signature connection points.

#### SUNBRELLA®:

Solution-dyed, acrylic fiber, UV, water, and mold resistant outdoor fabric.

**Net Weight:** 35 kg / 77.2 lb



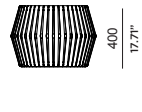
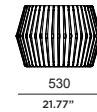
# HAMILTON

## HAMILTON\_06 Foot Stool

### FRAME



Olephin Rope



### SPECIAL FEATURES



#### PROTECTIVE COVER

### DESCRIPTION:

Tree-top living meets luxury in this range inspired by the lush environment of Hamilton Island, Australia. The fresh-feel collection makes use of rope olephin on the arms, combined with Harbour's signature powder-coated frame. With a comely clean design in mind, it keeps the intention clear, to brighten and lighten any space this sculptural piece will inhabit. This airy, vertical silhouette series is ready to elevate any natural sanctuary.

### PROTECTIVE COVERS:

Protect your investment with water-repellent Sea-Sprae® fabric; protective backside coating, UV resistant.

### TECHNICAL INFORMATION

#### POWDER COATED ALUMINIUM:

Asko Nobel® handcrafted, powder coated, rust-proof aluminium frame, reinforced signature connection points.

**Net Weight:** 20 kg / 44.1 lb