

# DESALTO



## Element

Tokujiin Yoshioka · 2013

An iconic table, Element is a symbol of purity and poetry, the essence of the visionary designer Tokujiin Yoshioka's style. The central support, delicately balanced between the two horizontal elements, defies gravity, suspended between earth and sky, between the past and the future.

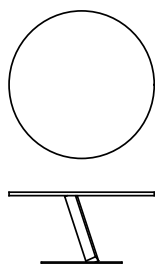


+61 8 9389 6669  
info@henriliving.com.au  
245 Stirling Hwy, Claremont WA 6010  
www.henriliving.com.au

# Henri

## Available models

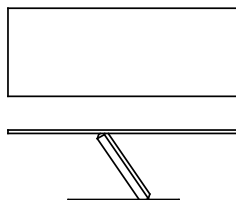
Disassembling table with steel frame, metal or MDF top, in lacquered or materic spread by hand finishings.



Element

height  
72 cm

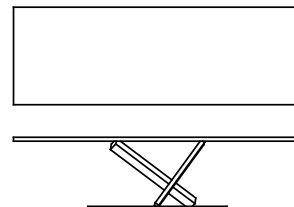
measures  
Ø 140 cm  
Ø 160 cm



Element

height  
72 cm

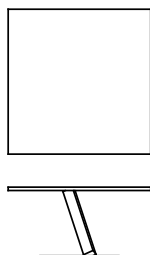
measures  
200 x 99 cm  
240 x 99 cm



Element

height  
72 cm

measures  
300 x 99 cm



Element

height  
72 cm

measures  
148 x 148 cm

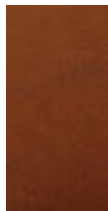
## Finishing

### Base

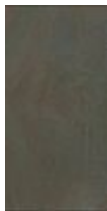
#### Handcraft finishes



A90 METAL  
GREY



D60  
MATTONE  
RED  
CONCRETE



A92 METAL  
BRONZE



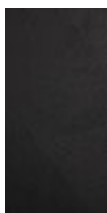
D62 COURT  
GREY



D63  
BIANCO  
DUOMO



D65 LUNA  
GREY  
CONCRETE



D66 BLACK  
CONCRETE



D61 WITHE  
CONCRETE



D55 REALE  
BLUE  
CONCRETE



D57 OCRA  
CONCRETE



D56  
ARDESIA  
CONCRETE



D58  
GHIACCIO  
CONCRETE



D59 CACAO  
CONCRETE

#### Lacquers



A66  
LACCATO  
FERRO  
GREZZO



B13  
SABBIA



B22  
MARRONE  
BUNGEE



B59 NERO  
OPACO



B62  
BIANCO  
OPACO



B70 ROSSO  
LAMPONE

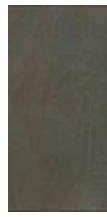
## Handcraft finishes



A90 METAL  
GREY



D60  
MATTONE  
RED  
CONCRETE



A92 METAL  
BRONZE



D62 COURT  
GREY



D63  
BIANCO  
DUOMO



D65 LUNA  
GREY  
CONCRETE



D66 BLACK  
CONCRETE



D61 WITHE  
CONCRETE



D55 REALE  
BLUE  
CONCRETE



D57 OCRA  
CONCRETE



D56  
ARDESIA  
CONCRETE



D58  
GHIACCIO  
CONCRETE



D59 CACAO  
CONCRETE

## Lacquers



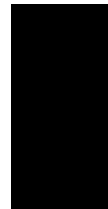
A66  
LACCATO  
FERRO  
GREZZO



B13  
SABBIA



B22  
MARRONE  
BUNGEE



B59 NERO  
OPACO



B62  
BIANCO  
OPACO



B70 ROSSO  
LAMPONE

