

MIDJ

Bloom H50 Coffee Table

design Studio Pastina, 2020

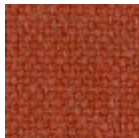


Bloom is a coffee table with sound absorbing action, thanks to its exclusive base upholstered in fabric, leather or faux leather. The top is made of metal or HPL.

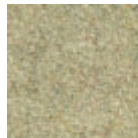
Thanks to its versatility, Bloom coffee table matches with sofas and armchairs in a functional way.

Colors and Materials

Structure



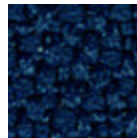
Cotton Club fabric
14 Colors



Fenix Wool fabric
16 Colors



Main Line Flax fabric
16 Colors



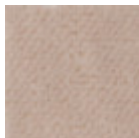
Mirage fabric
15 Colors



Second fabric
11 Colors



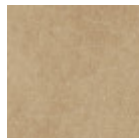
Visual fabric
13 Colors



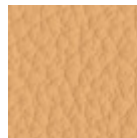
Velvet Superb
15 Colors



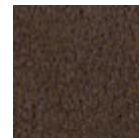
Secret faux leather
23 Colors



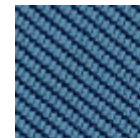
Vintage faux leather
12 Colors



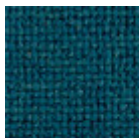
Fiore leather
21 Colors



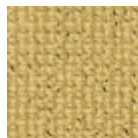
Vintage leather
8 Colors



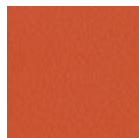
Tessuto Oceanic
13 Colors



Manhattan fabric
13 Colors



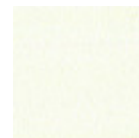
Yoredale fabric
14 Colors



Papaya orange steel



Light blue metal



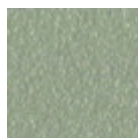
White steel



Ocean blue steel



Bronze metal



Sand steel



Fango steel



Golden yellow metal



Pastel yellow steel



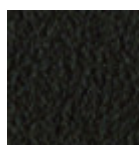
Grafite metal



Ash grey metal



Light grey steel



Brown steel



Black steel



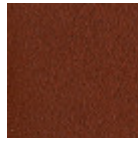
Ocher steel



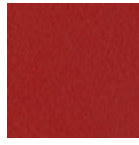
Facepowder pink metal



Red steel



Bulgaro red metal



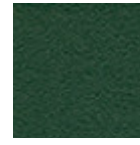
Cherry red metal



Pine green steel



Sage green metal



Dark green metal

Top



White hpl black core



White hpl white core



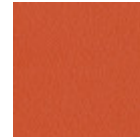
Black hpl



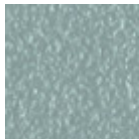
Hpl cemento



Hpl corten



Papaya orange steel



Light blue metal



White steel



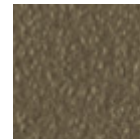
Ocean blue steel



Bronze metal



Sand steel



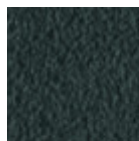
Fango steel



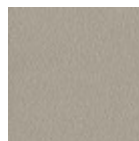
Golden yellow metal



Pastel yellow steel



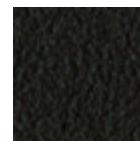
Grafite metal



Ash grey metal



Light grey steel



Brown steel



Black steel



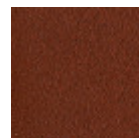
Ocher steel



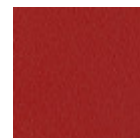
Facepowder pink metal



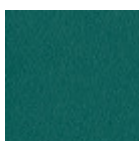
Red steel



Bulgaro red metal



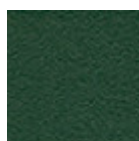
Cherry red metal



Pine green steel



Sage green metal



Dark green metal

Dimensions



A (cm)

(inch)

B (cm)

(inch)

C (cm)

(inch)

50

19.7

60

23.6

60

23.6

Volumetric Details

Weight 13 Kg

Volume 0.15 mc

Package 2

Henri