

# MIDJ

## Bloom H40 Coffee Table

design Studio Pastina, 2020

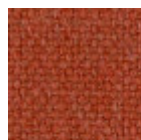


Bloom coffee table is composed of two elements: an original round base upholstered in fabric, leather or faux leather with sound-absorbing action. The top is available in metal or HPL.

Bloom is available in two different sizes and is suitable for waiting areas or lounge rooms.

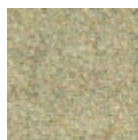
### Colors and Materials

#### Structure



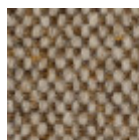
**Cotton Club fabric**

14 Colors



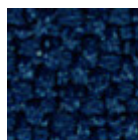
**Fenix Wool fabric**

16 Colors



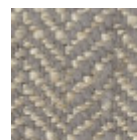
**Main Line Flax fabric**

16 Colors



**Mirage fabric**

15 Colors



**Second fabric**

11 Colors



**Visual fabric**

13 Colors



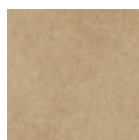
**Velvet Superb**

15 Colors



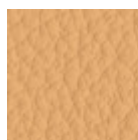
**Secret faux leather**

23 Colors



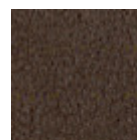
**Vintage faux leather**

12 Colors



**Fiore leather**

21 Colors



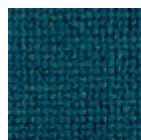
**Vintage leather**

8 Colors



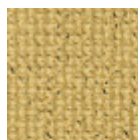
**Tessuto Oceanic**

13 Colors



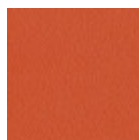
**Manhattan fabric**

13 Colors



**Yoredale fabric**

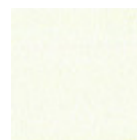
14 Colors



**Papaya orange steel**



**Light blue metal**



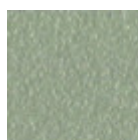
**White steel**



**Ocean blue steel**



**Bronze metal**



**Sand steel**



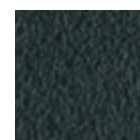
**Fango steel**



**Golden yellow metal**



**Pastel yellow steel**



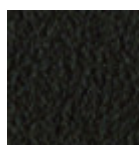
**Grafite metal**



Ash grey metal



Light grey steel



Brown steel



Black steel



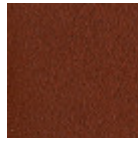
Ocher steel



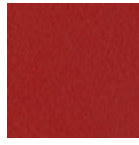
Facepowder pink metal



Red steel



Bulgaro red metal



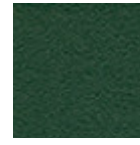
Cherry red metal



Pine green steel



Sage green metal



Dark green metal

## Top



White hpl black core



White hpl white core



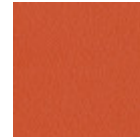
Black hpl



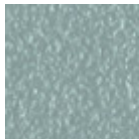
Hpl cemento



Hpl corten



Papaya orange steel



Light blue metal



White steel



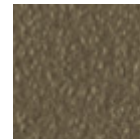
Ocean blue steel



Bronze metal



Sand steel



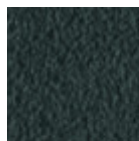
Fango steel



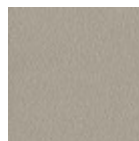
Golden yellow metal



Pastel yellow steel



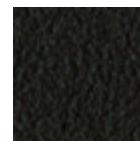
Grafite metal



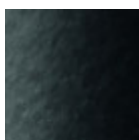
Ash grey metal



Light grey steel



Brown steel



Black steel



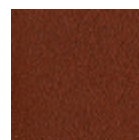
Ocher steel



Facepowder pink metal



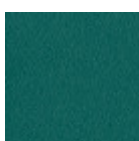
Red steel



Bulgaro red metal



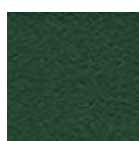
Cherry red metal



Pine green steel

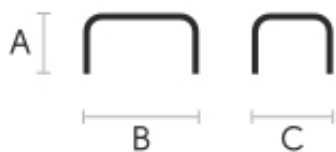


Sage green metal



Dark green metal

## Dimensions



A (cm) (inch)	B (cm) (inch)	C (cm) (inch)
40 15.7	70 27.6	70 27.6

## Volumetric Details

Weight 13 Kg

Volume 0.15 mc

Package 2

# Henri